

Laserglow Product Datasheet

Galileo Pro Portable Alignment Laser Module

Laserglow Part Number:
GGE005XXX

Similar Products:

For information about the other lasers in this product family visit:

<http://www.laserglow.com/GGE>

Ordering:

Order Online Now or Request Quote:

<http://www.laserglow.com/GGE005XXX>

Series Specifications:

| | |
|--------------------|--------|
| Nominal Wavelength | 532 nm |
| Output Type | CW |
| Laser Source Type | DPSS |



Overview:

Galileo Pro with adjustable beam alignment. Adjustable set screws can be used to direct the beam parallel to the housing, as beams in most hand-held laser pointers are not guaranteed parallel. This makes the Galileo PRO a perfect choice where the body of the laser should serve as your alignment guide, or when the laser rotates on a shaft.

All of Laserglow's green laser pointers are IR-filtered for safety and employ APC technology to maintain constant output power. APC (Automatic Power Control) is a system that uses an optical feedback loop to ensure stable laser output.

Key Features:

- *Starting at: \$129*
- *Output Power:* 3 mW - 5 mW (model dependent)
- *Casing:* Hard Anodized black machined aluminum
- *Wavelength:* 532 nm (green)
- *Key Feature:* 100% continuous operation
- *Key Feature:* 4 Adjustable set screws to allow beam steerage
- *Package Includes:* Portable laser, battery, Allen key, carrying case, instructions/warranty.
- *Safety Info:* Complies with Class IIIa regulations.
- *Duty Cycle:* 100%

Quality, safety and unique features make Laserglow the leader in green pointers. [Learn more here.](#)

Specifications:

This spec sheet has been generated specifically for part number GGE005XXX, per your request, and data for the entire series is also displayed for your reference. The specs which are specific to GGE005XXX have been highlighted below in **red + bold**.

| | |
|--|---------------------------|
| Output Power (mW) | <5 |
| Central Wavelength (nm) | 531.65 |
| Divergence (mrad, full angle) | <1.2 |
| Beam Dimensions (mm, 1/e²) | 1.5 |
| Operating Temperature Range (°C) | 15 to 35 |
| Total Power Consumption (W) | 2 |
| Max. Power Input Duty Cycle | 100% |
| Standard Warranty (months) | 6 |
| MTTF (operational hours) | 5000 |
| Weight of Product or Laser Head (kg) | 0.08 |
| Dimensions of Product or Laser Head (mm) | 118 (l) x 20 (d) |
| Power Supply | 1 x CR123A Battery |

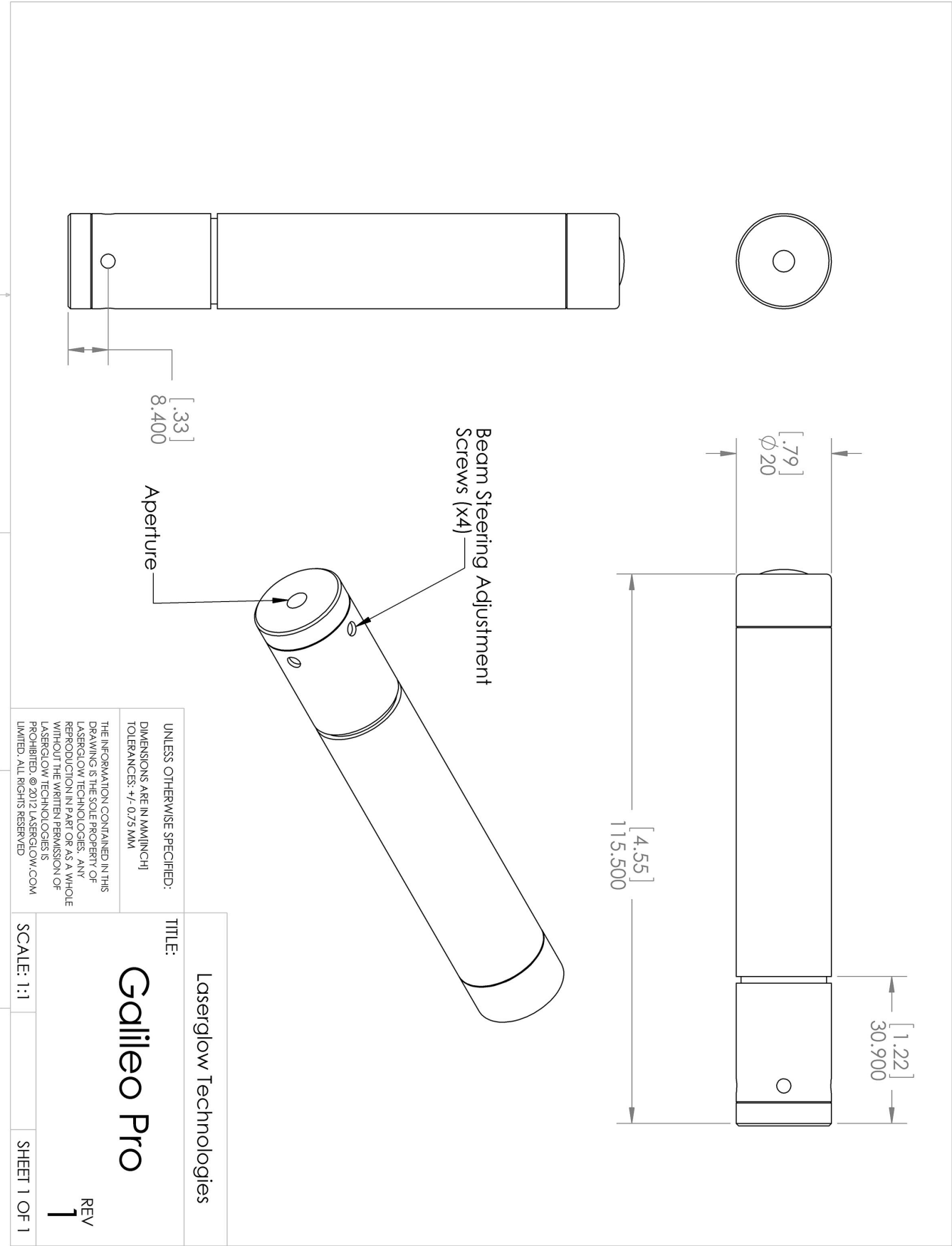
CW: All specifications are based on performance at full output power and after the specified warmup period. Output characteristics may change if the laser is run at a different power level.

Q-Switched: Specifications are based on the laser pulsing at the specified design frequency. Output characteristics may change if the laser is run at a different frequency.

Regulatory Classification:




The model you have selected (GGE005XXX) requires the following safety label(s):





Accessories:

The most popular accessories for model GGE005XXX are shown below. For additional details regarding these or other accessories please see our website or contact us directly.

| Part Number | Description | |
|--|---|--|
|  ATPC50XXX | Table Top Tripod Max height 600mm Full Details: www.laserglow.com/ATP | |
|  ATPC30XXX | Mini Tripod Max height 175mm Full Details: www.laserglow.com/ATP | |
|  AGM00BXXX | Brightline/Galileo Tripod Adaptor 20.1mm ID Full Details: www.laserglow.com/AGM | |

FOR MORE INFORMATION PLEASE CONTACT:

LASERGLOW TECHNOLOGIES
99 Ingram Dr. Unit B, North York, ON, Canada M6M2L7
Tel. (416) 729-7976 Fax (716) 322-3510
sales@laserglow.com www.laserglow.com

E&OE: Data included in this sheet may be subject to change without notice.

Please confirm critical specifications with our staff prior to ordering.